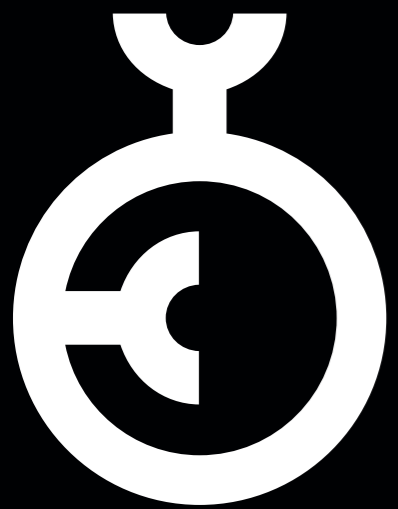




# HADI

WORKSPACE REDESIGNED  
BY HADI TEHERANI

*teherani*



**GERMAN  
DESIGN  
AWARD  
WINNER  
2022**

HADI CATALOGUE | SPRING 2023  
ENGLISH

All technical information and values (e.g. lumen, output, beam angle or dimensions) correspond to the printing date or the creation date of this document and will not necessarily be updated. All changes and adaptations that serve to improve our products can be carried out without prior notice.

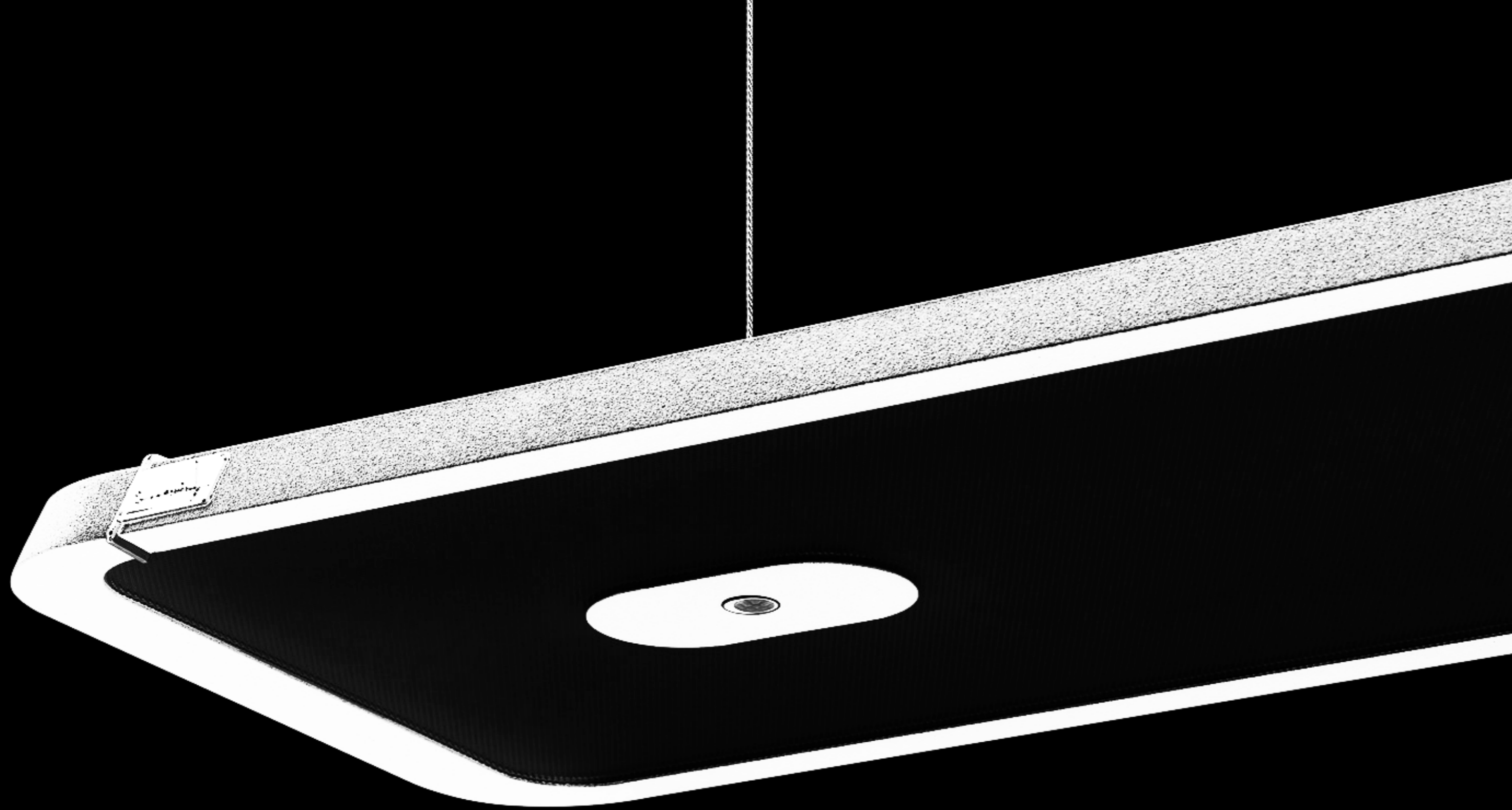
The latest data sheets can be configured at [www.prolicht.at](http://www.prolicht.at)

# PROLICHT MAKES A DIFFERENCE

If you promise your demanding clients bespoke, high-tech, quality products, you can't have them made just anywhere. We manufacture our products where the best trained technicians, engineers and designers find themselves at home: right in the middle of the Tyrolean Alps.

At the end of the day, it is their skill that makes a difference. And it is their expertise that has made PROLICHT one of the world's most successful premium manufacturers of architectural lighting concepts. Sustainably produced and custom made in Europe.





“My holistic approach has always taken me beyond the usual boundaries of creativity.”

Hadi Teherani | Architect & Designer





# HADI

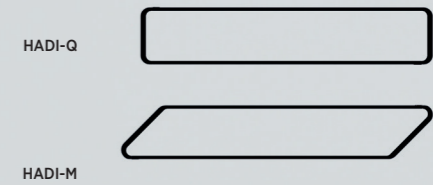
## WORKINGSPLACE REDESIGNED BY HADI TEHERANI

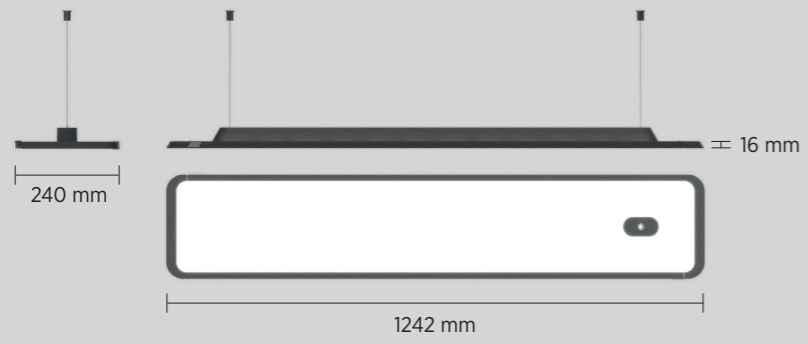
HADI, the new family of luminaires, named after its exceptionally talented designer, Hadi Teherani, made to set a new benchmark in office lighting, performing at the highest technical level, and breaking conventions in terms of design. A unique interaction of design and technology.



# ULTRA FLAT DESIGN

The ultra flat, aluminium housing with rounded edges is only 16 mm thick and integrates perfectly into any office architecture. The total depth of the luminaire is just 48 mm.

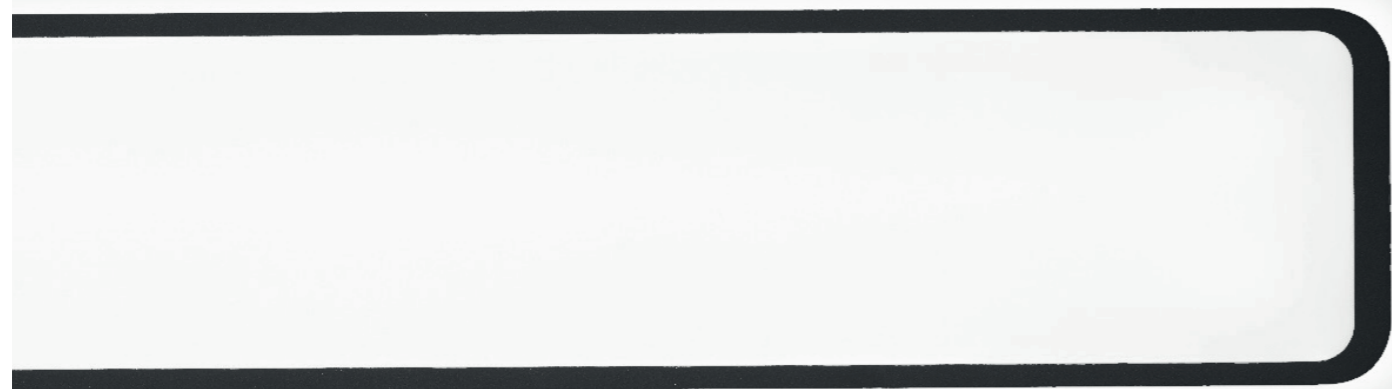




# 1 DESIGN 2 SHAPES

## HADI-M

Modern, yet timeless.  
Minimalistic and powerful.  
A unique masterpiece of design and understatement.



## HADI-Q

A dynamic piece of art.  
Unusual. Different, like nothing else.  
Designed for the ones who expect the extraordinary.







## 1 DESIGN 2 MOUNTING OPTIONS

An optional sensor can automatically adapt the luminaire's settings to changing light conditions. In a DALI installation, the sensor for one fitting can also take over the control of other luminaires. In the stand alone version, the sensor and the whole functionality can be managed with an included remote control.

## SMART SENSOR CONTROL

An optional sensor can automatically adapt the luminaire's settings to changing light conditions. In a DALI installation, the sensor for one fitting can also take over the control of other luminaires. In the stand-alone version, the sensor and the whole functionality can be managed with an included remote control. 3 Pole für Nachrüstung mit Fernbedienung, 5 Pole für Neubau über Bussteuerung - Steuerung mehrerer verbauten Leuchten möglich. Erhältlich mit und ohne Fernbedienung





## ALL THE VARIANTS YOU NEED

The HADI complete family is available in a variety of alternatives:  
for suspended installation, ceiling surface mounted or as an insert for the  
HYPRO system.



HADI SURFACE



HADI SUSPENDED



HADI HYPRO INSERT

# EFFICIENCY AND COMFORT

Thanks to its outstanding efficiency one single HADI can illuminate two working desks (according EN 12464), minimizing the power consumption for the desired lighting level. Its CRI > 90, combined with an URG < 19 and its perfectly homogeneous emitting surface make the HADI the ideal solution for comfortable office space, especially in one of the many available versions featuring indirect lighting, the final ingredient for the perfect atmosphere.





## SUSPENDED MOUNTING

The HADI complete family is available in a variety of alternatives:  
for suspended installation, ceiling surface mounted or as an insert for the HYPRO system.

HADI-Q | SUSPENDED



 DIRECT

HADI-Q | SUSPENDED



 DIRECT/INDIRECT parallel

HADI-Q | SUSPENDED



 DIRECT/INDIRECT separately



## SURFACE MOUNTED

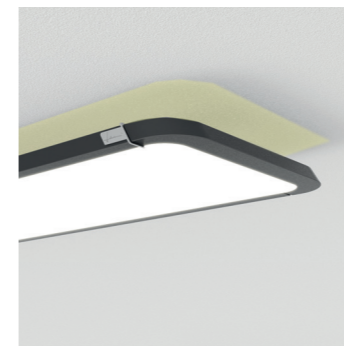
The HADI complete family is available in a variety of alternatives:  
for suspended installation, ceiling surface mounted or as an insert for the HYPRO system.

HADI-Q | SURFACE



 DIRECT

HADI-Q | SURFACE



 DIRECT | AURA





WWW.PROLICHT.AT

# CONFIGURATION MAKES A DIFFERENCE



RAL Classic or any other special color on request

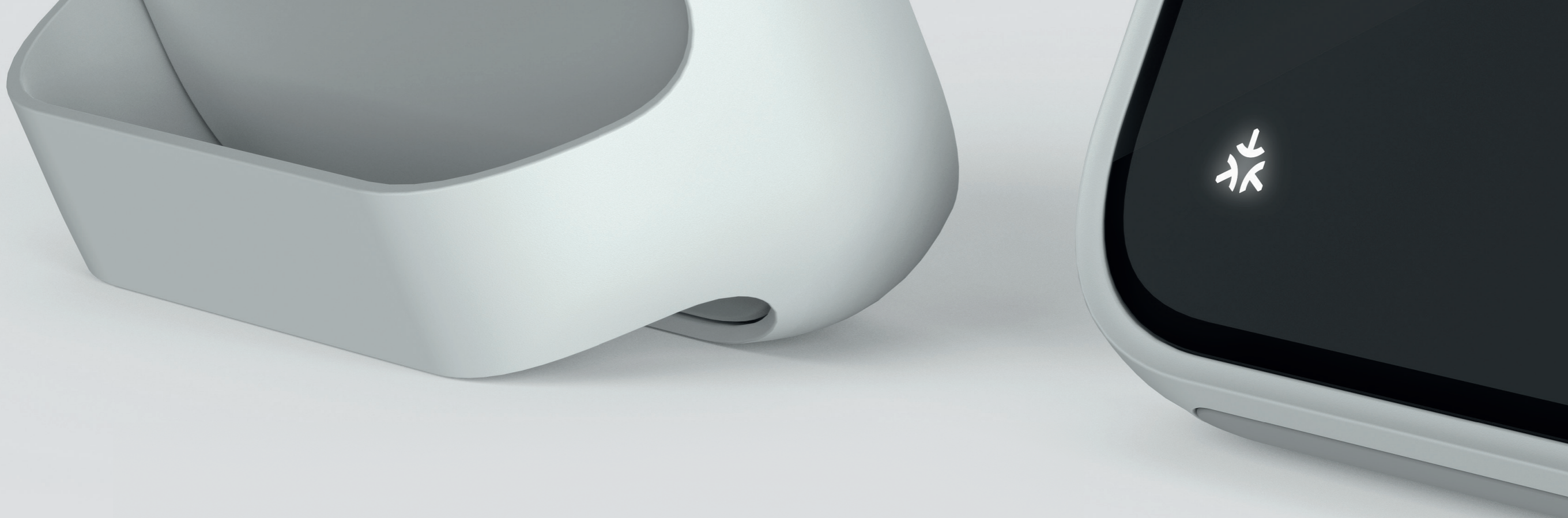
Luminaires play an important role in your room design, which means that you need to have unlimited configurability. And that's what we at PROLICHT can give you. With all our lighting solutions.

Try it out and see for yourself what it means to create your own, tailor-made product from millions of possible combinations - with the help of our unique 3D configurator.



## MAKE IT YOURS!

CONFIGURE ONLINE:  
WWW.PROLICHT.AT/HADI



## THE NEW SYMBOL OF CONNECTIVITY!

Imagine a world where all your devices seamlessly work together.  
The idea is simple. The impact is powerful.

## OUR PRODUCTS ARE READY!

Configure now your MATTER enabled lighting solution.  
PROLICHT is offering as one of the first companies in the lighting industry, the standard matter for more than 1.000 light fittings in over 50.000 possible configurations. From now on our downlights, tracks and luminaires can be controlled together with your other devices in your smart home via just one interface.

## THE FIRST SMART LIGHTING SHOWROOM IN THE WORLD

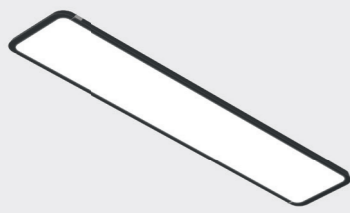
Learn about all the ways you can integrate the new standard into your project and make your lighting smart.  
You want to visit us? We are looking forward to welcome you in the heart of the Alps!

All PROLICHT Matter light fittings work natively with Apple Home, Google Home, Amazon Alexa and Samsung SmartThings, and with many other home automation control systems.

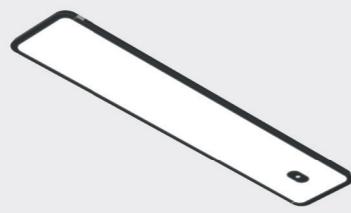
# THE FUTURE IS NOW!

PROLICHT WORKS WITH MATTER

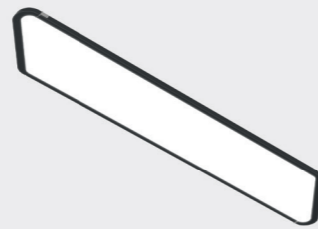




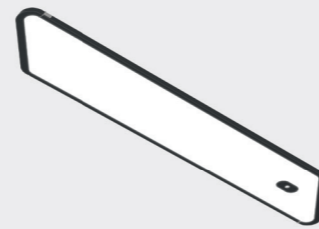
HADI-M SURFACE



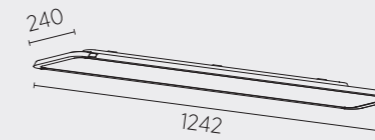
HADI-M SENSOR SURFACE



HADI-Q SURFACE

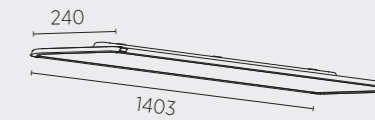


HADI-Q SENSOR SURFACE



HADI-M SURFACE

1242 x 240 mm



HADI-Q SURFACE

1403 x 240 mm

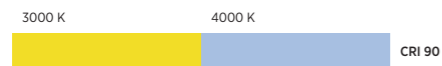
POWER

38 WATT

IP INTERNATIONAL PROTECTION

IP20

COLOR TEMPERATURE CCT



BEAMWIDTH

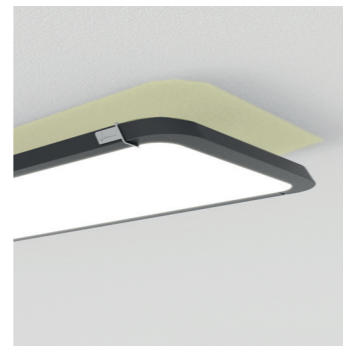
DIRECT



AURA



DIRECT



DIRECT | AURA

### HADI-M

DESCRIPTION	VERSION		DIMENSION / mm	CCT / K	LUMEN MAX.	WATT	CRI	ART.-N° ON/OFF	ART.-N° DALI	ART.-N° MATTER
	DIRECT		1242 x 240	• 3000 4000	4660	38	90	<b>310-3600</b>	<b>310-3602</b>	<b>310-3604</b>
	DIRECT/AURA		1242 x 240	• 3000 4000	4610	38	90	<b>310-3620</b>	<b>310-3622</b>	<b>310-3624</b>
								ART.-N° SENSOR RC	ART.-N° SENSOR CS	ART.-N° MATTER
SENSOR	DIRECT		1242 x 240	• 3000 4000	4660	38	90	<b>310-3610</b>	•	•
SENSOR	DIRECT		1242 x 240	• 3000 4000	4660	38	90	•	<b>310-3612</b>	•
SENSOR	DIRECT/AURA		1242 x 240	• 3000 4000	4610	38	90	<b>310-3630</b>	•	•
SENSOR	DIRECT/AURA		1242 x 240	• 3000 4000	4610	38	90	•	<b>310-3632</b>	•

### HADI-Q

DESCRIPTION	VERSION		DIMENSION / mm	CCT / K	LUMEN MAX.	WATT	CRI	ART.-N° ON/OFF	ART.-N° DALI	ART.-N° MATTER
	DIRECT		1403 x 240	• 3000 4000	4660	38	90	<b>310-3640</b>	<b>310-3642</b>	<b>310-3644</b>
	DIRECT/AURA		1403 x 240	• 3000 4000	4610	38	90	<b>310-3660</b>	<b>310-3662</b>	<b>310-3664</b>
								ART.-N° SENSOR RC	ART.-N° SENSOR RC	ART.-N° MATTER
SENSOR	DIRECT		1403 x 240	• 3000 4000	4660	38	90	<b>310-3650</b>	•	•
SENSOR	DIRECT		1403 x 240	• 3000 4000	4660	38	90	•	<b>310-3652</b>	•
SENSOR	DIRECT/AURA		1403 x 240	• 3000 4000	4610	38	90	<b>310-3670</b>	•	•
SENSOR	DIRECT/AURA		1403 x 240	• 3000 4000	4610	38	90	•	<b>310-3672</b>	•

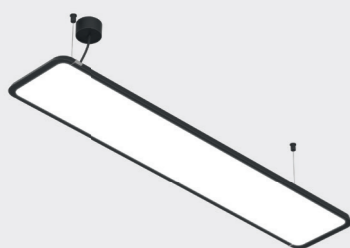
COLOR

25 PROLICHT COLORS

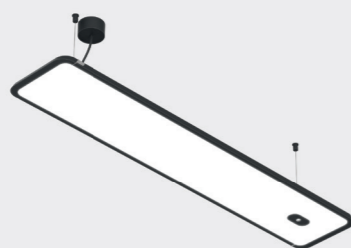


RAL Classic or any other color on request

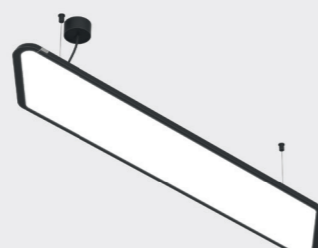




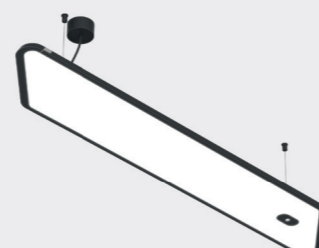
HADI-M SUSPENDED



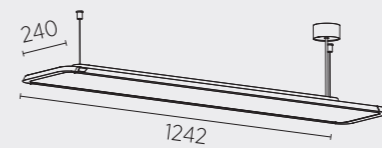
HADI-M SENSOR SUSPENDED



HADI-Q SUSPENDED

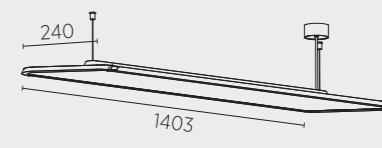


HADI-Q SENSOR SUSPENDED



HADI-M SUSPENDED

1242 x 240 mm



HADI-Q SUSPENDED

1403 x 240 mm

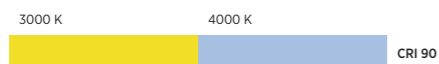
POWER

38 - 77 WATT

IP INTERNATIONAL PROTECTION

IP20

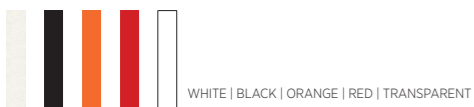
COLOR TEMPERATURE CCT



BEAMWIDTH



SUSPENSION CABLE: COLOR & LENGTH (2000 / 6000 mm)



COLOR

25 PROLICHT COLORS



DIRECT



DIRECT/INDIRECT PARALLEL



DIRECT/INDIRECT SEPARATELY

RAL Classic or any other color on request

### HADI-M

DESCRIPTION	VERSION	DIMENSION / mm	CCT / K	LUMEN MAX.	WATT	CRI	ART.-N° ON/OFF	ART.-N° DALI	ART.-N° MATTER	
	DIRECT	1242 x 240	• 3000 4000	4660	38	90	410-9830	410-9832	410-9834	
	DIR/INDIR PARALLEL	1242 x 240	• 3000 4000	6010	77	90	410-9840	410-9842	410-9844	
	DIR/INDIR SEPARATELY	∩	1242 x 240	• 3000 4000	7680	69	90	410-9850	410-9852	•
	DIR/INDIR SEPARATELY	∩ TUNABLE WHITE	1242 x 240	• 3000 4000	7550	69	90	•	410-8062	•

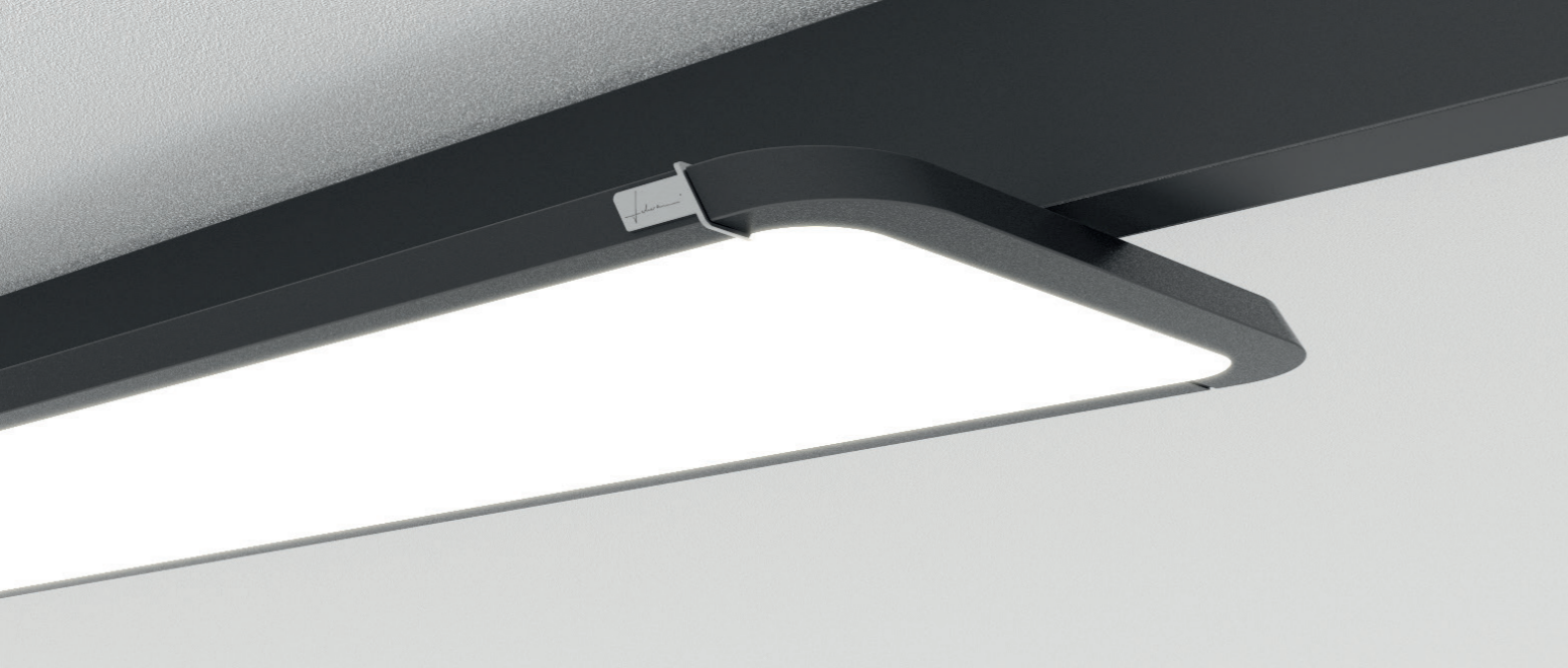
SENSOR	VERSION	DIMENSION / mm	CCT / K	LUMEN MAX.	WATT	CRI	ART.-N° ON/OFF	ART.-N° DALI	ART.-N° MATTER	
	DIRECT	1242 x 240	• 3000 4000	4660	38	90	410-8010	•	•	
	DIRECT	1242 x 240	• 3000 4000	4660	38	90	•	410-8012	•	
	DIR/INDIR PARALLEL	1242 x 240	• 3000 4000	6010	77	90	410-8030	•	•	
	DIR/INDIR PARALLEL	TUNABLE WHITE	1242 x 240	• 3000 4000	6010	77	90	•	410-8032	•
	DIR/INDIR PARALLEL	1242 x 240	• 3000 4000	7680	69	90	410-8050	•	•	
	DIR/INDIR SEPARATELY	∩	1242 x 240	• 3000 4000	7680	69	90	•	410-8052	•
	DIR/INDIR SEPARATELY	∩ TUNABLE WHITE	1242 x 240	• 3000 4000	7550	39	90	•	410-8072	•

### HADI-Q

DESCRIPTION	VERSION	DIMENSION / mm	CCT / K	LUMEN MAX.	WATT	CRI	ART.-N° ON/OFF	ART.-N° DALI	ART.-N° MATTER	
	DIRECT	1403 x 240	• 3000 4000	4660	38	90	410-9910	410-9912	410-9914	
	DIR/INDIR PARALLEL	1403 x 240	• 3000 4000	6010	77	90	410-9920	410-9922	410-9924	
	DIR/INDIR SEPARATELY	∩	1403 x 240	• 3000 4000	7680	69	90	410-9930	410-9932	410-9934
	DIR/INDIR SEPARATELY	∩ TUNABLE WHITE	1403 x 240	• 3000 4000	7550	69	90	•	410-8142	•

SENSOR	VERSION	DIMENSION / mm	CCT / K	LUMEN MAX.	WATT	CRI	ART.-N° ON/OFF	ART.-N° DALI	ART.-N° MATTER	
	DIRECT	1403 x 240	• 3000 4000	4660	38	90	410-9950	•	•	
	DIRECT	1403 x 240	• 3000 4000	4660	38	90	•	410-9952	•	
	DIR/INDIR PARALLEL	1403 x 240	• 3000 4000	6010	77	90	410-9960	•	•	
	DIR/INDIR PARALLEL	TUNABLE WHITE	1403 x 240	• 3000 4000	6010	77	90	•	410-9962	•
	DIR/INDIR PARALLEL	1403 x 240	• 3000 4000	7680	69	90	410-9970	•	•	
	DIR/INDIR SEPARATELY	∩	1403 x 240	• 3000 4000	7680	69	90	•	410-9972	•
	DIR/INDIR SEPARATELY	∩ TUNABLE WHITE	1403 x 240	• 3000 4000	7550	39	90	•	410-9982	•

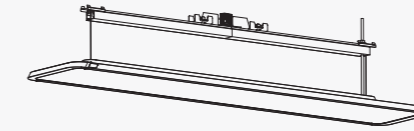




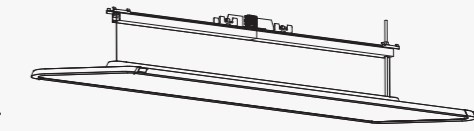
HADI-M SURFACE  
1242 x 240 mm



HADI-Q SURFACE  
1403 x 240 mm



HADI-M SUSPENDED  
1242 x 240 mm



HADI-Q SUSPENDED  
1403 x 240 mm

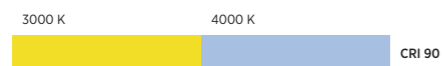
POWER

38 / 78 WATT

IP INTERNATIONAL PROTECTION

IP20

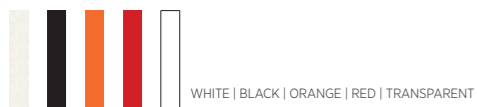
COLOR TEMPERATURE CCT



BEAMWIDTH



SUSPENSION CABLE: COLOR & LENGTH (2000 / 6000 mm)



COLOR

25 PROLICHT COLORS



RAL Classic or any other color on request

HADI SURFACE | HYPRO - INSERT

DESCRIPTION	VERSION	DIMENSION / mm	CCT / K		LUMEN MAX.	WATT	CRI	IP	ART-N° RECESSED	ART-N° SURFACE	ART-N° SUSPENDED	ART-N° HYPRO-X
HADI-M	DIRECT	L: 1242 x B: 240	• 3000	4000	4352	38	90	IP20	7-02829-..*	7-02828-..*	7-02827-..*	7-02830-..*
HADI-M	DIRECT/INDIRECT	L: 1242 x B: 240	• 3000	4000	6119	78	90	IP20	7-02833-..*	7-02832-..*	7-02831-..*	7-02834-..*
HADI-Q	DIRECT	L: 1403 x B: 240	• 3000	4000	3987	38	90	IP20	7-02837-..*	7-02836-..*	7-02835-..*	7-02838-..*
HADI-Q	DIRECT/INDIRECT	L: 1403 x B: 240	• 3000	4000	5899	78	90	IP20	7-02841-..*	7-02840-..*	7-02839-..*	7-02842-..*

CONTROL OPTION: \* ..-00 ON/OFF | ..-02 DALI | ..-04 MATTER

HADI SUSPENDED | HYPRO - INSERT

DESCRIPTION	VERSION	DIMENSION / mm	CCT / K		LUMEN MAX.	WATT	CRI	IP	ART-N° RECESSED	ART-N° SURFACE	ART-N° SUSPENDED	ART-N° HYPRO-X
HADI-M	DIRECT	L: 1242 x B: 240	• 3000	4000	4352	38	90	IP20	7-02591-..*	7-02590-..*	7-02592-..*	7-02593-..*
HADI-M	DIRECT/INDIRECT	L: 1242 x B: 240	• 3000	4000	6119	78	90	IP20	7-02595-..*	7-02594-..*	7-02596-..*	7-02597-..*
HADI-Q	DIRECT	L: 1403 x B: 240	• 3000	4000	3987	38	90	IP20	7-02623-..*	7-02622-..*	7-02624-..*	7-02625-..*
HADI-Q	DIRECT/INDIRECT	L: 1403 x B: 240	• 3000	4000	5899	78	90	IP20	7-02627-..*	7-02626-..*	7-02628-..*	7-02629-..*

CONTROL OPTION: \* ..-00 ON/OFF | ..-02 DALI | ..-04 MATTER



DISCOVER MORE ON  
[WWW.PROLICHT.AT/HYPRO](http://WWW.PROLICHT.AT/HYPRO)





EDITOR Filippo Bettinzoli, PROLICHT  
PROLICHT GmbH | Austria  
6091 Neu-Götzens | Gewerbepark 9  
T +43 5234 33 499 | F + 43 5234 33 499 22  
marketing@prolicht.at | www.prolicht.at

TECHNICAL SUPPORT Jürgen Raich

GRAPHIC DESIGN Tonia Wiedenmann

TEXT Julia Kopp, Philipp Juen

PRODUCT PHOTOS Armin Kuprian

PRODUCT RENDERINGS viewture.media

EDITION Spring 2023



 FOLLOW US ON  
INSTAGRAM

[WWW.PROLICHT.AT](http://WWW.PROLICHT.AT)